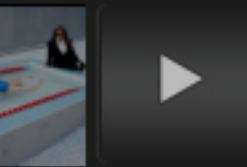
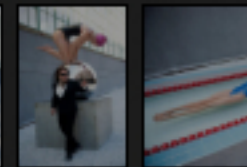




## Mana Contemporary's six new exhibitions

Guests view the hyper-realistic sculptures of Carole A. Feuerman in the exhibition *The Golden Mean* during a press preview on Tuesday, Sept. 24, 2013, of six new exhibitions opening on Sept. 29, 2013, at Mana Contemporary in Jersey City. Reena Rose Sibayan/*The Jersey Journal*

Reena Rose Sibayan/*The Jersey Journal*





## Mana Contemporary's six new exhibitions

Carole A. Feuerman with one of her hyper-realistic sculptures in the exhibition *The Golden Mean* during a press preview on Tuesday, Sept. 24, 2013, of six new exhibitions opening on Sept. 29, 2013, at Mana Contemporary in Jersey City. Reena Rose Sibayan/*The Jersey Journal*

Reena Rose Sibayan/*The Jersey Journal*





## Mana Contemporary's six new exhibitions

Carole A. Feuerman poses with her hyper-realistic sculpture of Olympic gold medalist swimmer Lauren Perdue, floating in a pool in a backstroke pose, part of her exhibition, *The Golden Mean*, during a press preview on Tuesday, Sept. 24, 2013, of six new exhibitions opening on Sept. 29, 2013, at Mana Contemporary in Jersey City. Reena Rose Sibayan/*The Jersey Journal*

Reena Rose Sibayan/*The Jersey Journal*

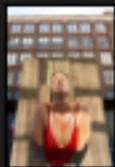


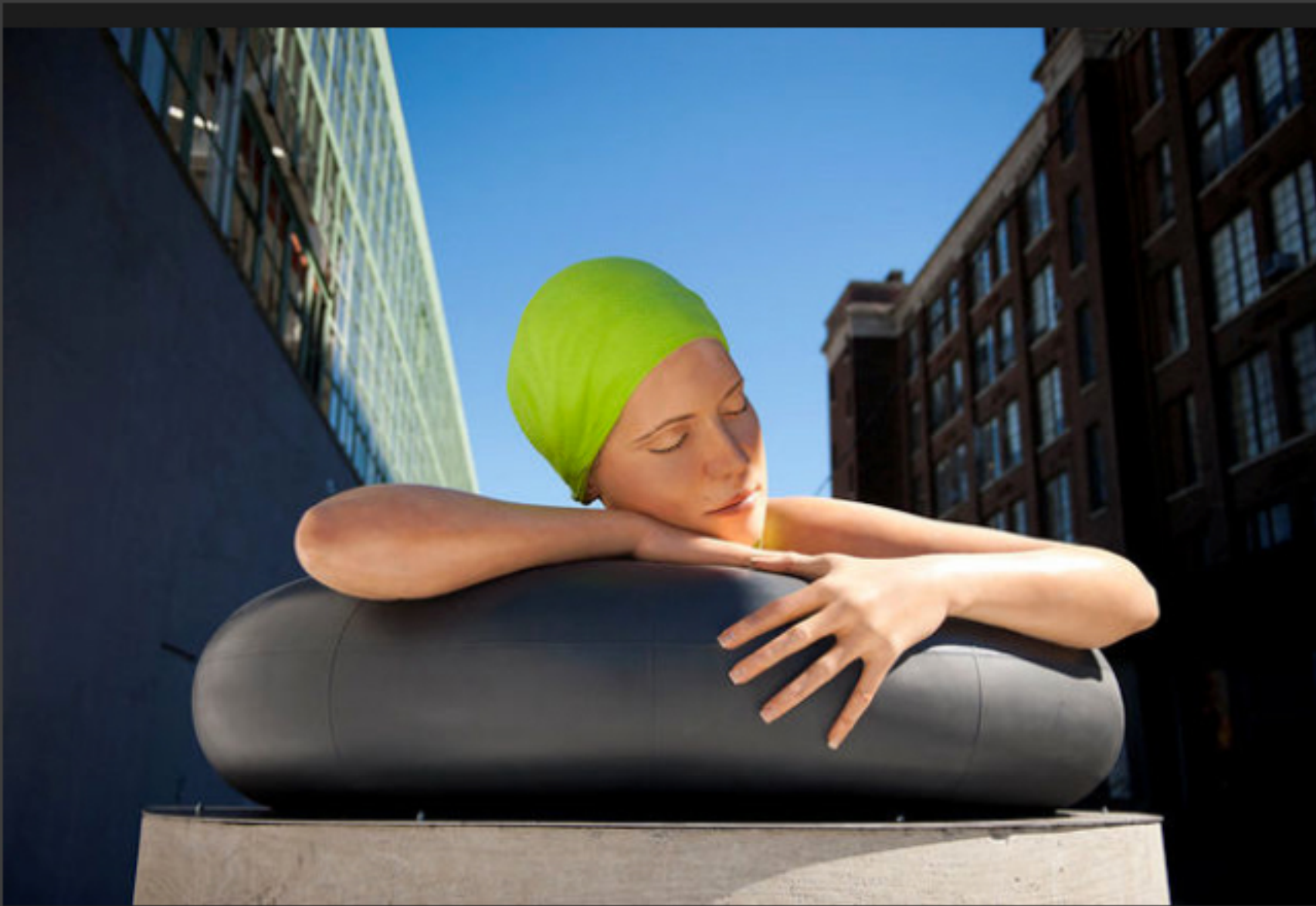


## Mana Contemporary's six new exhibitions

One of Carole A. Feuerman's hyper-realistic sculptures on display as part of The Golden Mean, one of six new exhibitions opening on Sept. 29, 2013, at Mana Contemporary in Jersey City. Reena Rose Sibayan/The Jersey Journal

Reena Rose Sibayan/The Jersey Journal

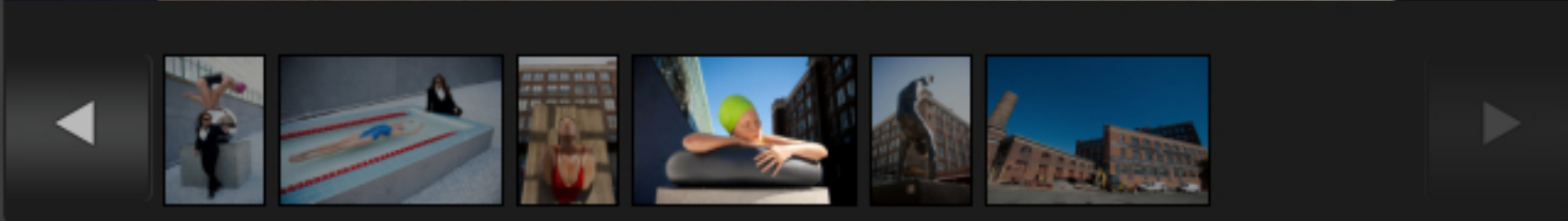




### **Mana Contemporary's six new exhibitions**

One of Carole A. Feuerman's hyper-realistic sculptures on display as part of The Golden Mean, one of six new exhibitions opening on Sept. 29, 2013, at Mana Contemporary in Jersey City. Reena Rose Sibayan/The Jersey Journal

Reena Rose Sibayan/The Jersey Journal





## Mana Contemporary's six new exhibitions

One of Carole A. Feuerman's hyper-realistic sculptures on display as part of The Golden Mean, one of six new exhibitions opening on Sept. 29, 2013, at Mana Contemporary in Jersey City. Reena Rose Sibayan/The Jersey Journal

Reena Rose Sibayan/The Jersey Journal

