

CAROLE A. FEUERMAN

SEA IDYLLS

MONUMENTAL EXHIBITION

PARK AVENUE, NEW-YORK



POPA
PATRONS OF PARK AVENUE

GALERIES

BARTOUX

« SEA IDYLLS »

MONUMENTAL EXHIBITION & SOLO SHOW

Carole A. Feuerman's iconic "swimmers" are back in New York!

At the initiative of Galeries Bartoux, with the support of Patrons of Park Avenue (POPA), Murray Hill Neighborhood Association (MHNA) and the City of New York, 9 monumental hyperrealistic artworks by artist Carole A. Feuerman will be installed on New York's famous Park Avenue, between 34th and 39th Streets, from April to December 2023.

In the hustle and bustle of the city, the poetry of the "SEA IDYLLS" exhibition will invite New Yorkers and tourists alike to stop for a few minutes to contemplate these larger-than-life sculptures...

In order to offer a complete experience and a dive into the universe of the doyenne of hyperrealism, a solo show is dedicated to her at the Galeries Bartoux New York until September... Numerous surprises await the visitors.



« SEA IDYLLS » MEMORABLE OPENINGS

On 27 April, New York was celebrating and the Queen was in town!

Welcomed by the Bartoux family and members of the PATRONS OF PARK AVENUE (POPA) and the MURRAY HILL NEIGHBORHOOD ASSOCIATION (MHNA), the artist Carole A. Feuerman stepped out of her limousine on Thursday, April 27 at 4 p.m to discover her 9 monumental artwork on New York's prestigious Park Avenue.

A swarm of photographers, about 200 friends, journalists, art lovers and a few New Yorkers, came to support the artist for an emotional opening. All were were amazed and captivated by the finesse and realism of these swimmers.

Later in the day, the meeting was this time in the Galeries Bartoux New York (104 Central South Park). More than 600 people walked the red carpet to discover the transformed gallery: they were able to dive into the artist's studio, see new creations alongside emblematic sculptures and live a unique immersive experience, guided for the occasion by the artist herself .

These openings have won the hearts of collectors and seem to augur well for the success of "SEA IDYLLS".

More information : <https://bit.ly/3HxBS3v>



OPENING THROWBACK



INSTALLATION THROWBACK



THE ARTIST'S WORD



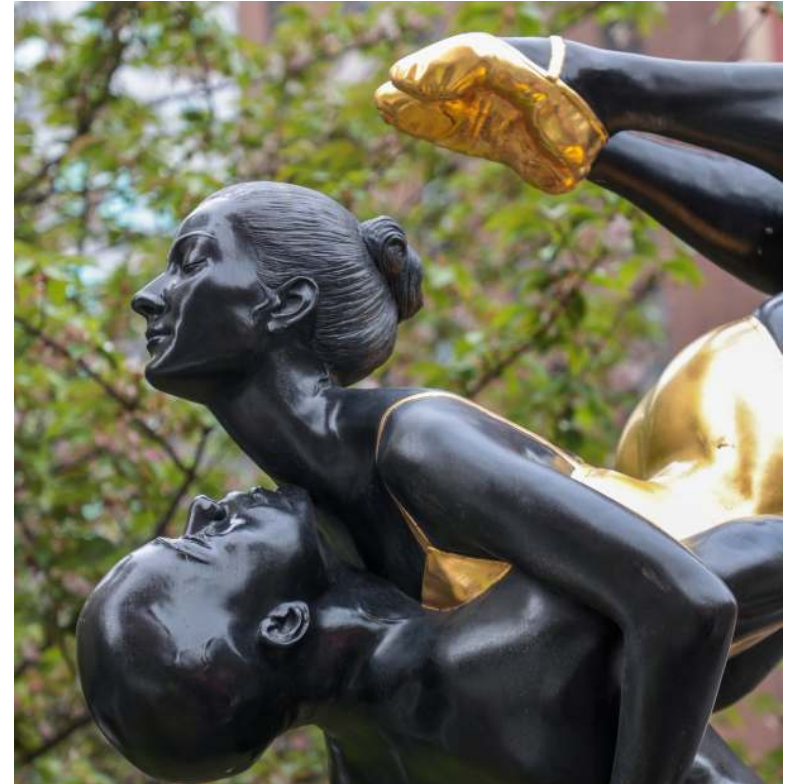
« Looking for a surreal experience in the heart of New York City? Look no further! I'm thrilled to announce my upcoming exhibition, SEA IDYLS, on Park Avenue in Murry Hill. Imagine walking down the bustling streets of New York, surrounded by towering buildings and the sounds of the city, and stumbling upon a hidden oasis of hyperrealistic sculptures.

This exhibition is not just about art but about creating a moment of pause and reflection for the viewers. A unique opportunity to take a break from the hustle and bustle of everyday life and immerse yourself in a surreal world of art.

This is a celebration of public art, and I'm honored to be a part of it. Don't miss out on this unforgettable experience, spread the word, and see you there! » -

CAROLE A. FEUERMAN

« STRENGTH »



“What does ‘strength’ really mean? To me it is not just the physical, but the emotional, the ability to overcome, to endure, to be able to admit when we are wrong, to be a person that stands up for others.”

Technique : Patinated Bronze with Gold Leaf Accents

Dimensions : 144 H x 48 W x 48 D inches – 365,75 H x 122 H x 112 D cm

« BROOKE WITH BEACH BALL »

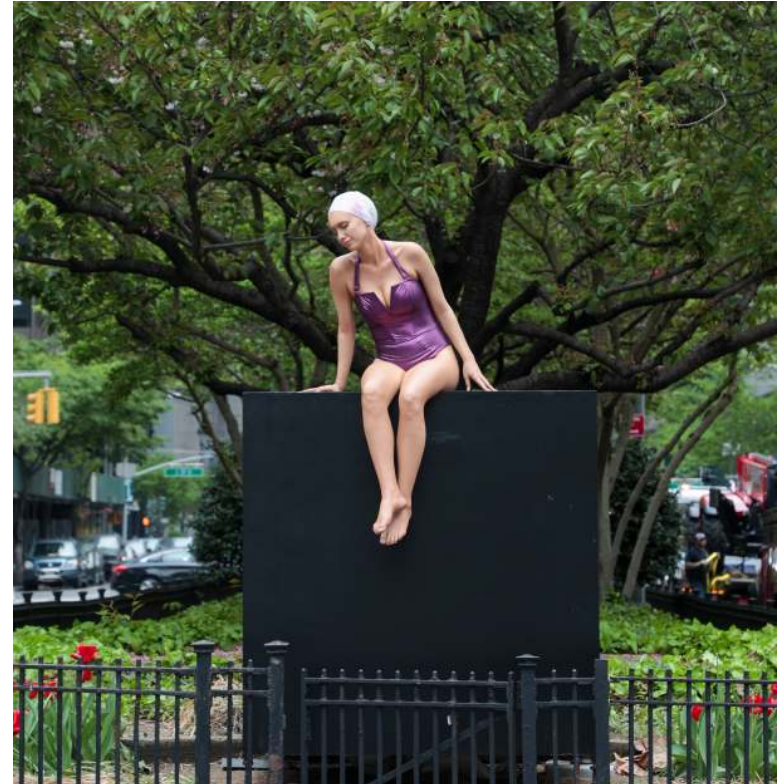


"Brooke with Beach Ball' is a child playing near the water with a ball and a smile on her face, is something we wish for all children."

Technique : Lacquer on Resin

Dimensions : 45 H x 60 W x 43 D inches – 114,5 H x 152,5 W x 109,20 D cm

« PISCES »



"Pisces', evoking the eponymous star of the Zodiac, is shown sitting calmly with her feet dangling down as if in a pool of water, as if an imaginary fish swimming around her toes."

Technique : Lacquer on Resin and Crystal Cap

Dimensions : 48 H x 33 W x 40 D inches – 112 H x 83,85 W x 101,5 D cm

« JUSTICE »

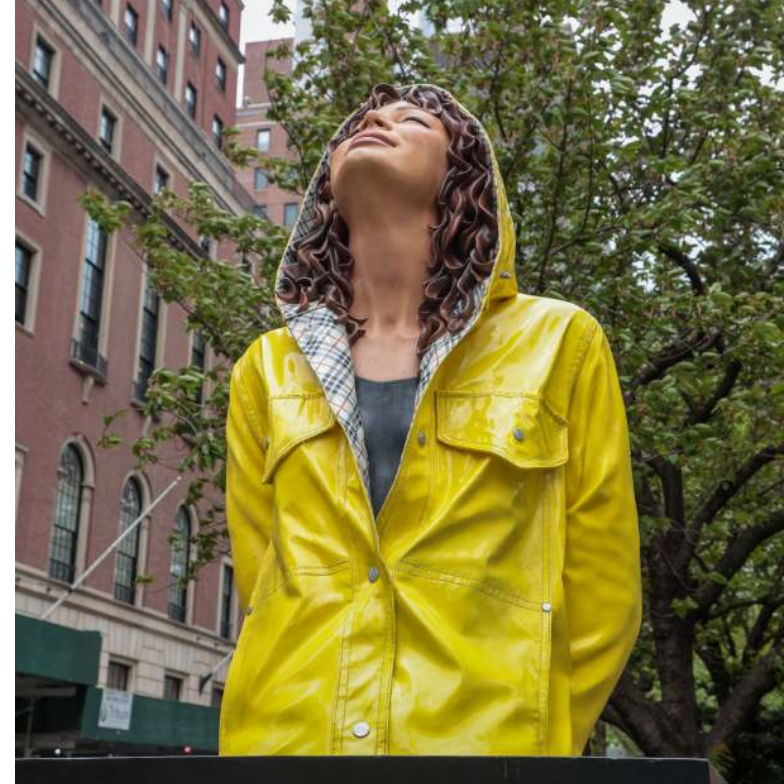


“Sitting on a polished sphere representing the world, this sculpture symbolizes the scales of justice. Now more than ever, we must each examine who we are, and what kind of world we want to live in. Our democracy is at stake.”

Technique : Lacquer on Bronze with Polished Stainless Steel Sphere

Dimensions : 112 H x 86 W x 86 D inches – 284,50 H x 218,45 W x 257,81 D cm

« NEW YORK CITY SLICKER »

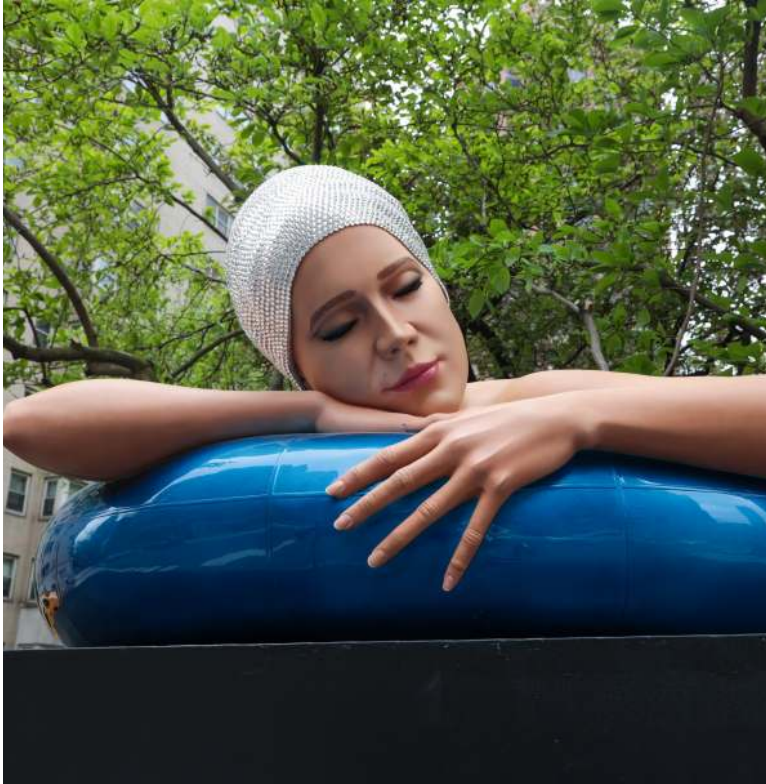


“I never knew what my coat was saying about me until I observed New Yorkers in the rain. Then, it hit me. The weather was showery and wintry, and most of them were wearing shiny rain slickers that I named ‘New York City Slickers’.”

Technique : Lacquer on Bronze

Dimensions : 63 H x 35 W x 38 D inches – 160 H x 89 W x 96,52 D cm

« SURVIVAL OF SERENA »



“The physical sense of being at peace derived from the act of submerging in water suggests the importance of an ordinary and universal activity.”

Technique : Lacquer on Resin With Crystal Cap

Dimensions : 48 H x 81 W x 36 D inches – 112 H x 205,75 W x 91,44 D cm

« BIBI ON THE BALL »



“Bibi on the Ball’ was inspired by my love of the beach and the enjoyment of the simple things in life. Remember, always live in the moment.”

Technique : Lacquer on Resin and Gold Leaf Cap

Dimensions : 64 H x 34 W x 46 D inches – 162,55 H x 86,35 W x 116,85 cm

« QUAN »



“Quan’ is the Chinese name for the ‘goddess of compassion’. In my interpretation, her poise and balance represent mental steadiness and emotional stability, calm behavior and judgment.”

Technique : Lacquer on Bronze with Crystal Cap and Polished Stainless Steel

Dimensions : 64 H x 34 W x 46 D inches – 162,55 H x 86,35 W x 116,85 cm

« THE GOLDEN MEAN »



“The Golden Mean’ is the epitome of my quest for balance in life. The gesture of the figure’s pose, and the degree of his beautifully curved arch, were critical decisions for me to maintain harmony and achieve that perfect ratio.”

Technique : Patinated Bronze with Gold Leaf Accents

Dimensions : 204 H x 48 W x 60 D inches – 518 H x 121,95 W x 152,5 D cm

« SEA IDYLLS » IMMERSIVE SOLO SHOW AT GALERIES BARTOUX

In parallel to the monumental exhibition at Park Avenue, Galeries Bartoux will host (from April to September) a solo show devoted to the universe of Carole A. Feuerman.

The sculptor will present new creations in our Central Park gallery. In order to offer visitors a real experience, part of the exhibition will be immersive ...

Going beyond the limits of hyperrealism, GALERIES BARTOUX in collaboration with the artist and SUPERBIEN STUDIO, have brought to life « PISCES », one of Carole A. Feuerman 's iconic artworks.

In this imaginary contemplative experience, lulled by the sound of the waves, the swimmer comes alive for a day. Through this poetic epic, she takes us with her in this more real than life Florida beach setting ...

Using innovative techniques, the sculpture comes to life in this 24-hour animated video of life on a wild beach.

« PISCES » becomes more and more real according to the sun cycle from dawn to dusk... at night she disappears into the sea, like an idyll ...

More information : <https://bit.ly/414mv9K>



Discover the video : <https://bit.ly/3ngSLbQ>



« THE GODDESS » EXCLUSIVE LATEST CREATION

« A goddess is a woman of extraordinary beauty and charm. A greatly admired or adored woman. From this definition, we can gather that what makes a woman a goddess is a woman who adds real value to people's lives, and she is also someone whom others look up to. This sculpture is my idea of a goddess. » - Carole A. Feuerman

This exclusive creation, of a young swimmer listening to the sound of the waves through a shell of great purity, will be unveiled in April during the Solo Show of the hyperrealist sculptor at the Galeries Bartoux New York



CAROLE A. FEUERMAN

[Carole A. Feuerman](#), born in 1945, is an American sculptor of international renown. She is recognized, along with Duane Hanson and John D'Andrea, as one of the three great American hyperrealist sculptors who launched the movement in the 1970s.

For more than 60 years, the artist has explored **classicism and beauty** in her creations, subjects rarely emphasized in contemporary art.

Particularly inspired by the world of swimming, Carole A. Feuerman, has fun creating characters of swimmers. Through her hyper-realistic sculptures, she transposes the elegance of swimmers in the water and their graceful evolutions.

Carole A. Feuerman insulates her artwork with **personality, sensuality and passion**: while their outward appearance is often one of peaceful beauty, these elegant faces hide a deeper meaning of **heroism, triumph and liberation**.



CAROLE A. FEUERMAN

Carole A. Feuerman's swimmers have in fact a cathartic effect. Through their own personalities, they convey stories: some autobiographical, others that the artist feels the need to express...

By combining classical sculptural materials such as **steel, bronze and resin** with more conventional supports, artist Carole A. Feuerman creates hybrid works from which emanate complex energies that provoke strong emotions in her audience...

The presence of details in the relief and painting, down to the water droplets, gives humanity to her creations... Carole A. Feuerman dazzles us with **her creations in balance between reality and imagination.**

« Throughout my artistic career, my style has undergone many transformations, but my passion for art and my love of creating art remain. »

MORE INFORMATIONS: <https://www.carolefeuerman.com/bio>



ALREADY IN THE PRESS !

These Hyperrealistic Swimming Sculptures Are Making A Splash On Park Avenue

Find them on Park Avenue between 34th and 38th Streets!



You may remember the "origami-polyvonal shaped" animal sculptures that turned Park Avenue into a wild jungle with colorful roaming creatures last year, but this year they're splashing into something different!

World-renowned artist, Carole A. Feuerman, and leading international art gallery, Galeries Bartoux, have unveiled their stunning hyperrealistic swimming sculptures that are plunging into Park Avenue, just in time for the warm weather.

New hyper-realistic sculptures of swimmers unveiled along Park Avenue



Thursday, May 4, 2023 2:33AM



'Carole A. Feuerman: Sea Idylls' Make a Splash on the Park Ave Divide in Murray Hill

Murray Hill, Outdoor Art Installations, Patrons of Park Avenue

Patrons of Park Avenue (POPA) have made a big splash with its second art installation along the Park Avenue divide from 34th Street to 38th Street in Murray Hill. Carole A. Feuerman: Sea Idylls ~ a Monumental Exhibition of nine sculptures will be on view to December 10, 2023. Artist Carole A. Feuerman and Galeries Bartoux will hold a formal unveiling/ribbon cutting on Thursday, April 27th at 4pm at 38th Street and Park Avenue.

In addition, Carole Feuerman: Sea Idylls, a solo exhibition is on view at Galeries Bartoux, 104 Central Park South, NYC. An Opening Reception for this exhibition will be held on April 27th at 6:30pm.

LARGER THAN LIFE SWIMMER SCULPTURES TAKE OVER PARK AVENUE

ARTS & CULTURE



Bikinis on Park Avenue? It's All About Art

For 55 years, the Brooklyn-based artist Carole Feuerman has created sculptures of female swimmers.

By ROSEMARY FEITELBERG APRIL 27, 2023, 4:22PM



Nine of the artist's sculpture are on view in New York City including "Pisces." PHOTO COURTESY CAROLE FEUERMAN

EYEWITNESS NEWS ABC : <https://7ny.tv/425MLI5>

WWD : <https://bit.ly/3Hvmx3t>

THE GUARDIAN : <https://bit.ly/3oXcu0y>

SECRET NYC : <https://bit.ly/40Z3yVL>

UNTAPPED NEW YORK : <https://bit.ly/3NttAgC>

ACCESSWIRE : <https://bit.ly/42hVgcu>

GOTHAM TO GO : <https://bit.ly/40UUwsH>

GALERIES BARTOUX

A FAMILY ADVENTURE

Galleries Bartoux is an international group with 20 galleries located in France, Monaco, London, New York and Miami representing a new generation of artists.

For nearly 30 years, the Bartoux family's artistic approach has been to interact with the public by raising awareness of art while opening a window on new and exciting cultural values. The Bartoux Galleries are open spaces. They are places for exchange and meeting between enthusiasts from often different backgrounds.

The group offers an artistic selection that includes works by great masters, established artists and emerging artists. It is this alchemy that creates the DNA of the Galleries Bartoux group.

With an unconditional love of the women and men of art, and an in-depth knowledge of the artistic professions, Galleries Bartoux helps to push back prejudices and to erase differences.

GALERIES BARTOUX NEW YORK CITY

New York, the city where art never sleeps, is a must for art lovers from all over the world. Inspired by the emulation and dynamism of this city, the BARTOUX New York Gallery, opened in 2000, is located just a few steps from Central Park (Manhattan). It regularly presents new creations and collaborations to dazzle our collectors in perpetual search of new works.

newyork@galleries-bartoux.com // +1 (646)454-0647



CONTACTS

For all requests for photos, videos or interviews with the artist, please contact

LAURA BARTOUX

Communication & Marketing Director

+ 33(0)6.70.84.36.01

laura.bartoux@galleries-bartoux.com

CLÉMENCE LANGLOIS

Social Media Manager & PR

+33(0)7.72.35.16.70

media@galleries-bartoux.com

GALERIES BARTOUX NEW YORK

104 Central Park South

+1 (646)454-0647

newyork@galleries-bartoux.com



[carolefeuerman](https://www.instagram.com/carolefeuerman)



[lesgalleriesbartoux](https://www.instagram.com/lesgalleriesbartoux)



POPA
PATRONS OF PARK AVENUE

GALERIES
BARTOUX